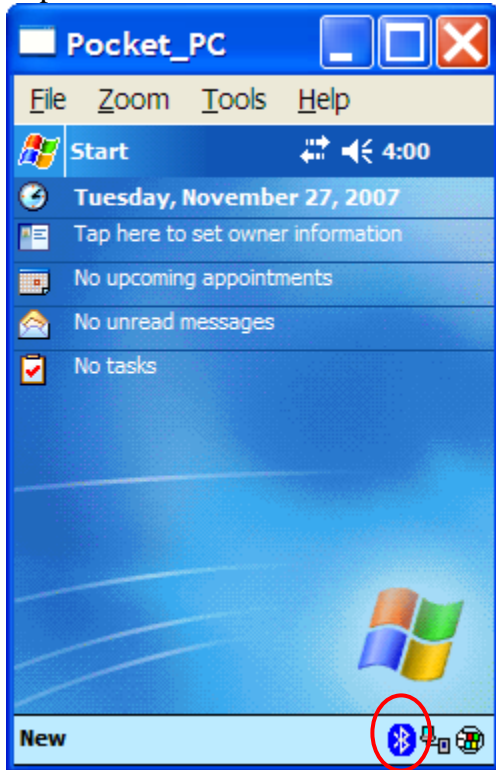


Face Profiler Printing Using Bluetooth Printer Recon with Socket bluetooth card

Plug the printer in and turn it on.
Tap the Bluetooth icon



Tap Advanced Features/Bluetooth Devices



Tap Tools/Device Discovery



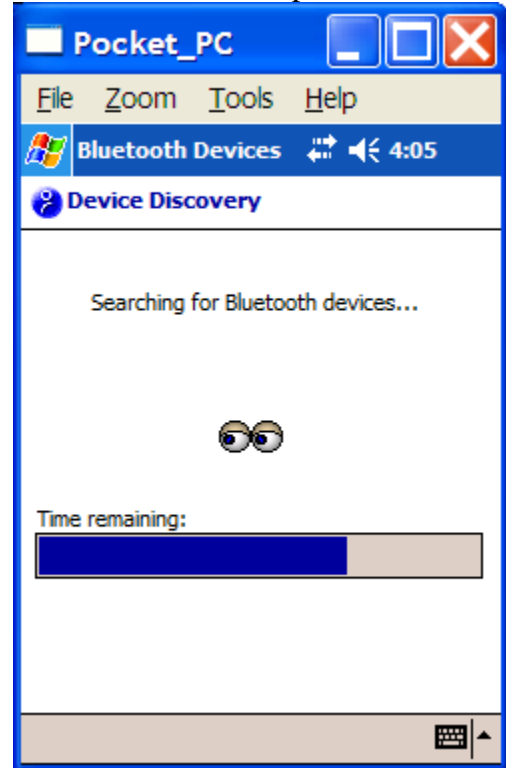
On the welcome screen tap Next



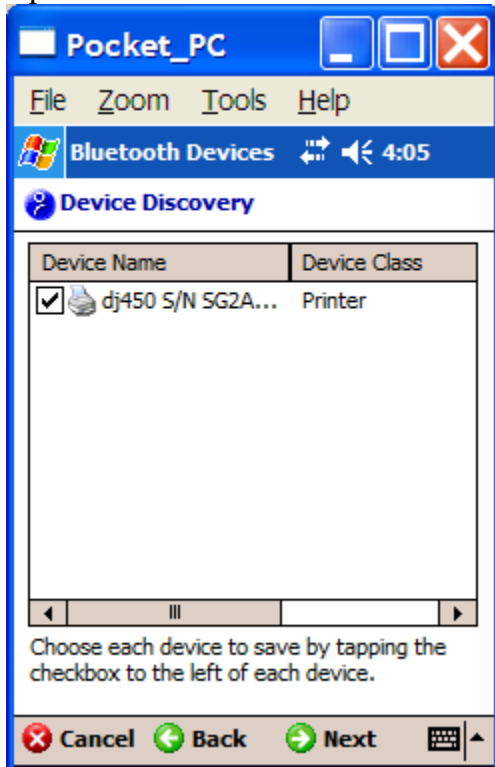
Select Any Bluetooth device and tap Next



Wait for it to find the printer



Check the box next to the printer and tap Next



Tap Finish



Select the printer. Tap Tools\My Favorites...



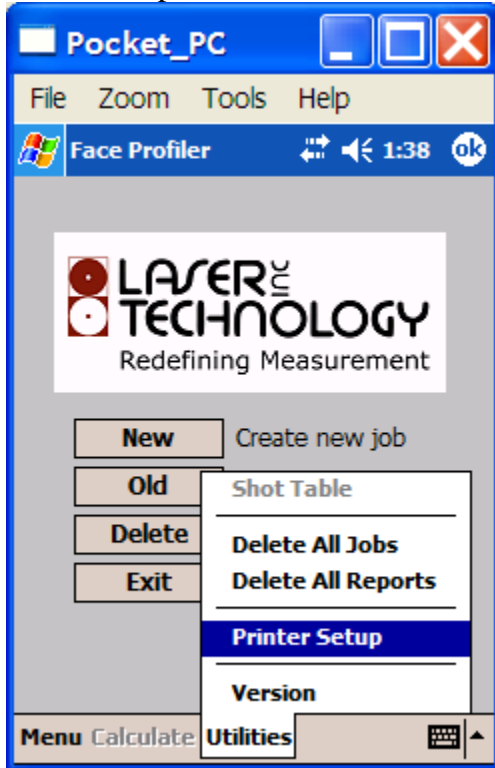
Tap the Printer Tab. Select Use the favorite selected above. Tap ok.



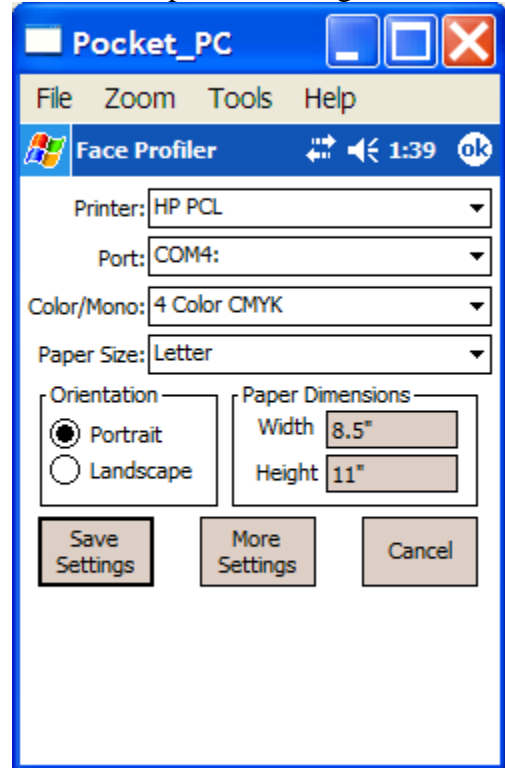
Tap X in upper right corner to close bluetooth manager



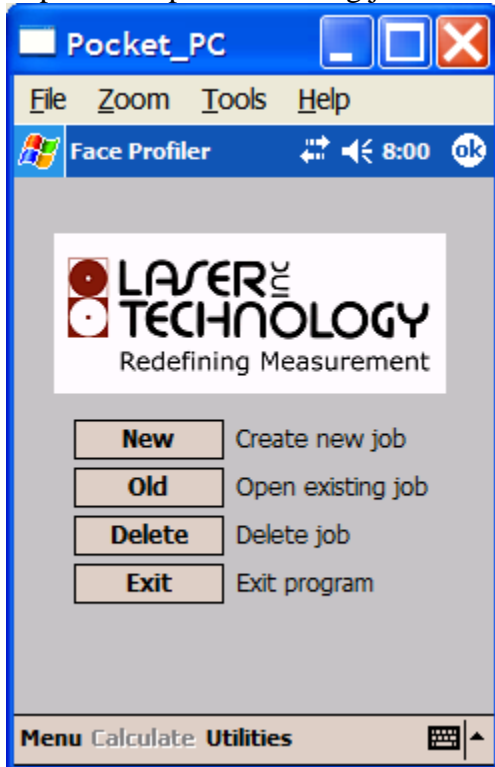
Start Face Profiler. Tap Utilities\
Printer Setup



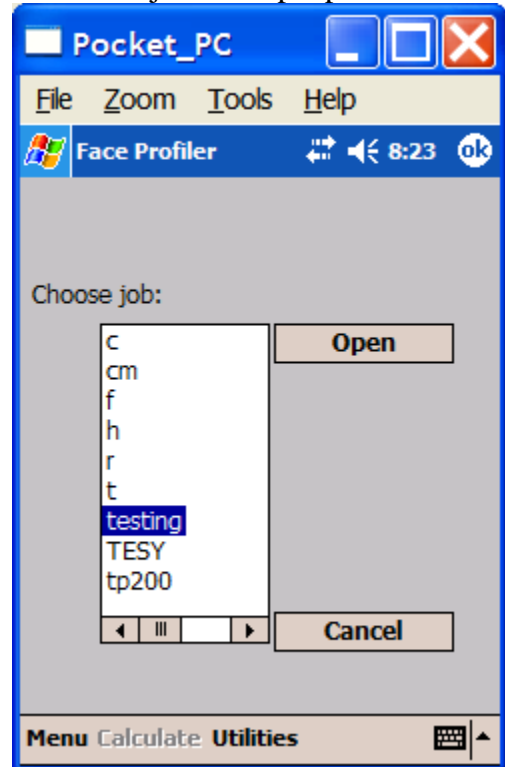
Select HP PCL for Printer and COM4
for Port. Tap Save Settings



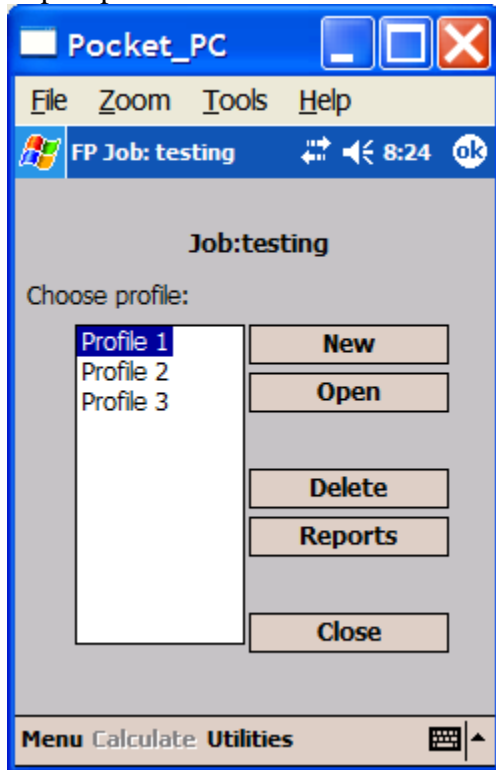
Tap Old to open an existing job.



Choose a job and tap Open



Tap Reports



Select the Profiles you want and tap Print Report

