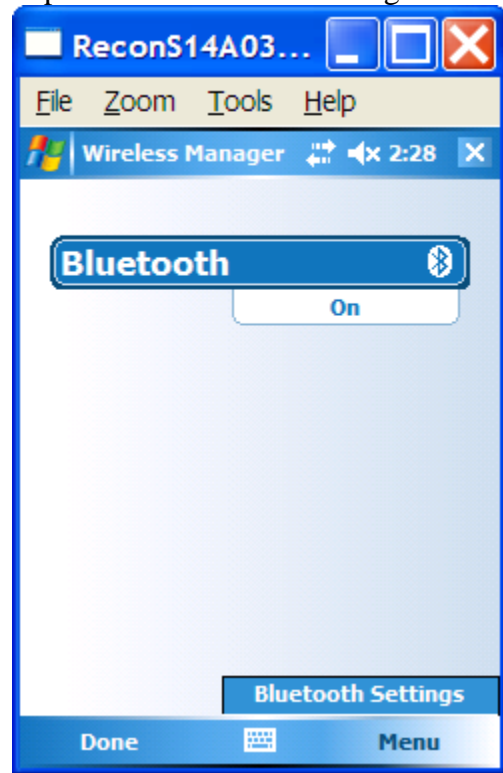


Face Profiler Printing Using Bluetooth Printer Recon with integrated bluetooth

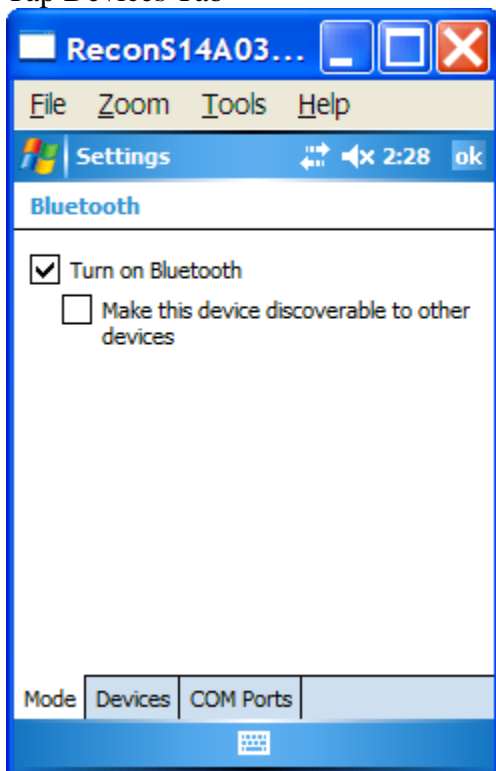
Plug the printer in and turn it on.
Tap the Bluetooth icon



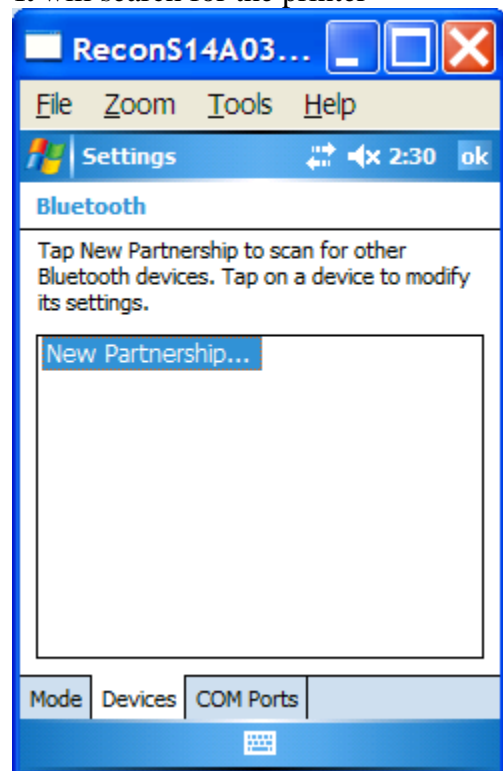
Tap Menu – Bluetooth Settings



Make sure Turn on Bluetooth is checked
Tap Devices Tab



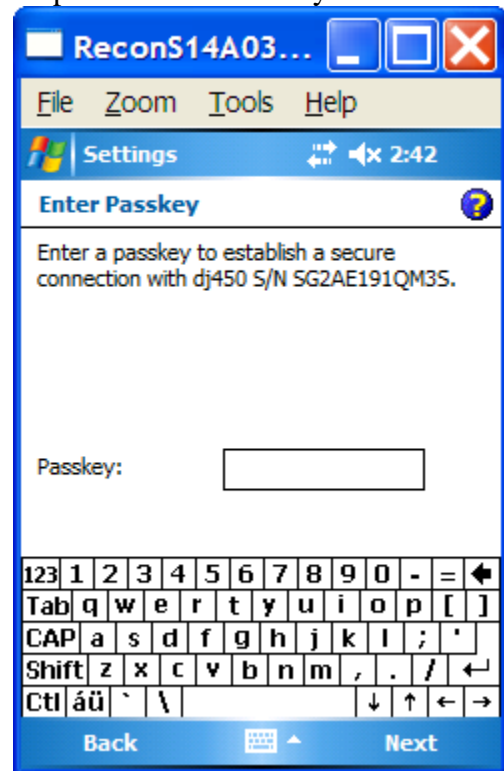
Tap New Partnership
It will search for the printer



Select the printer and tap Next



Tap Next at the Passkey screen



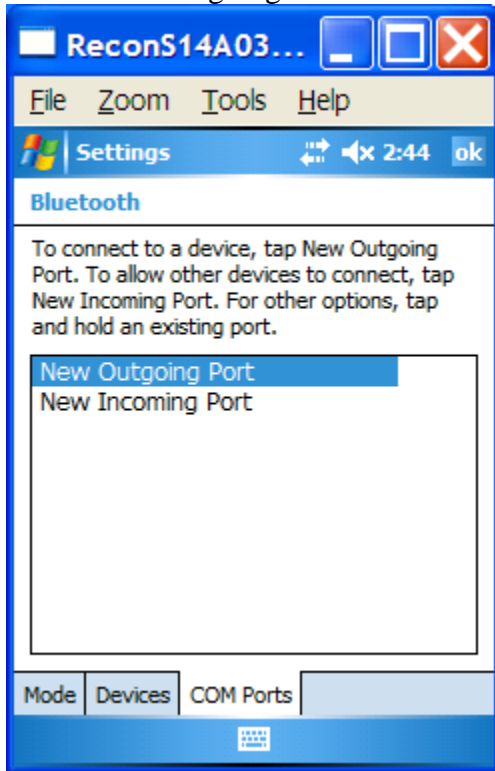
Make sure Serial Port is checked.
Tap Finish



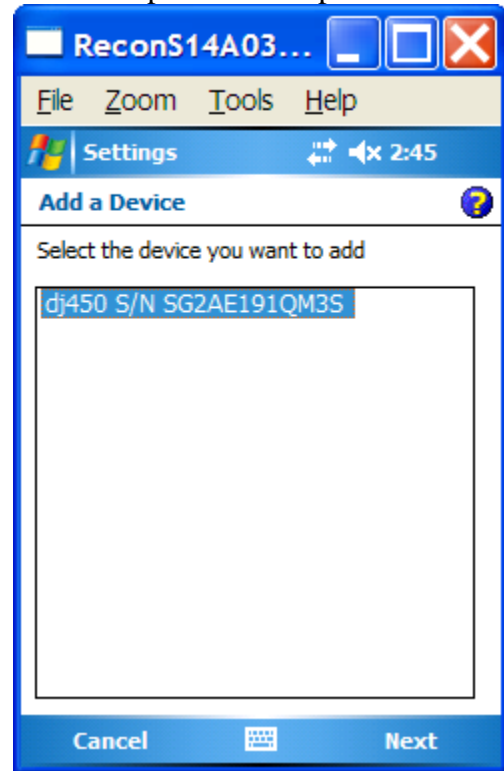
Tap the COM Ports Tab



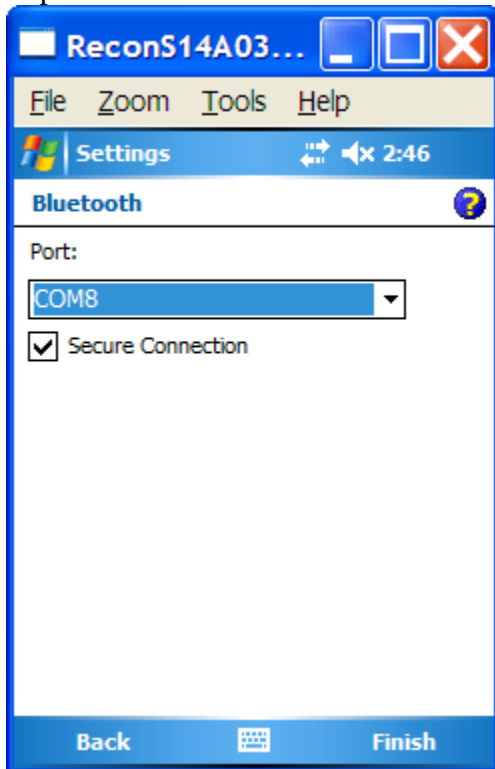
Select New Outgoing Port



Select the printer and tap Next



Select a Port (write it down for later)
Tap Finish



Start Face Profiler



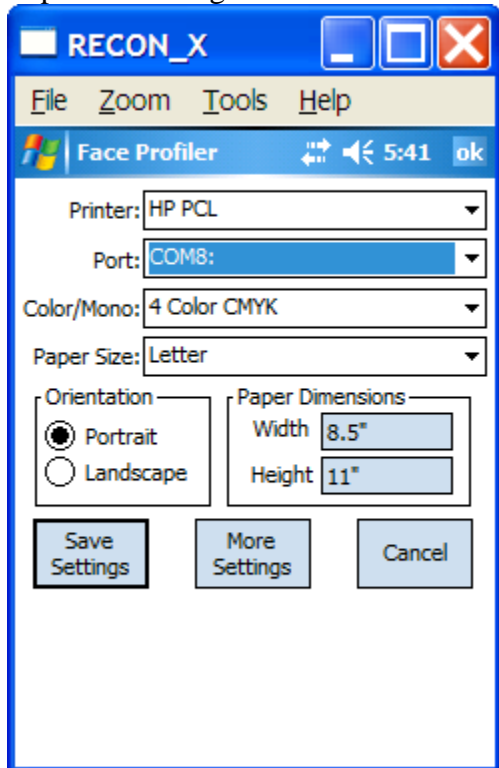
Tap Utilities – Printer Setup



Printer: select HP PCL

Port: select same port that was chosen in earlier step.

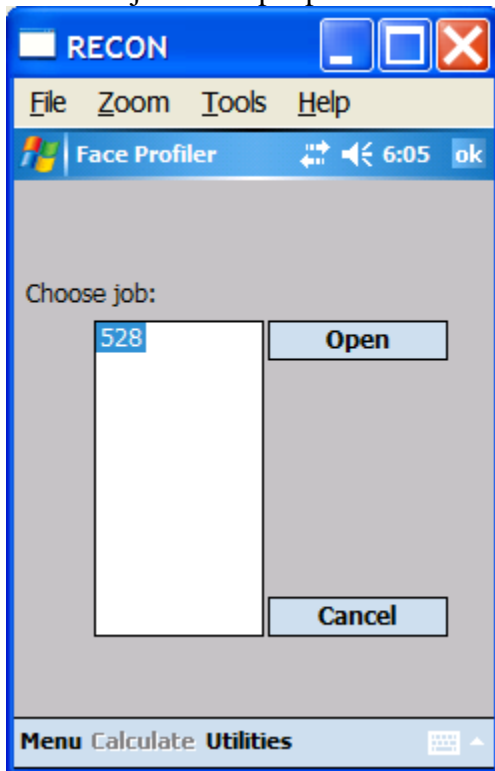
Tap Save Settings



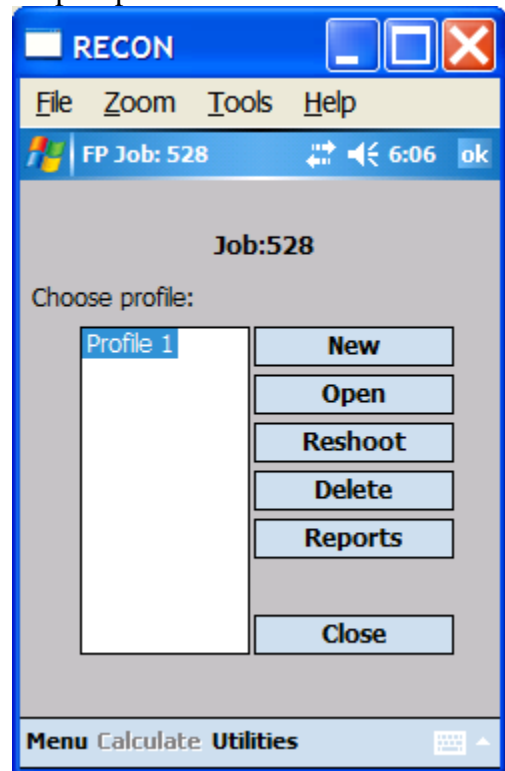
Tap Old to open an existing project



Choose a job and tap Open



Tap Reports



Select the Profiles you want and tap Print

