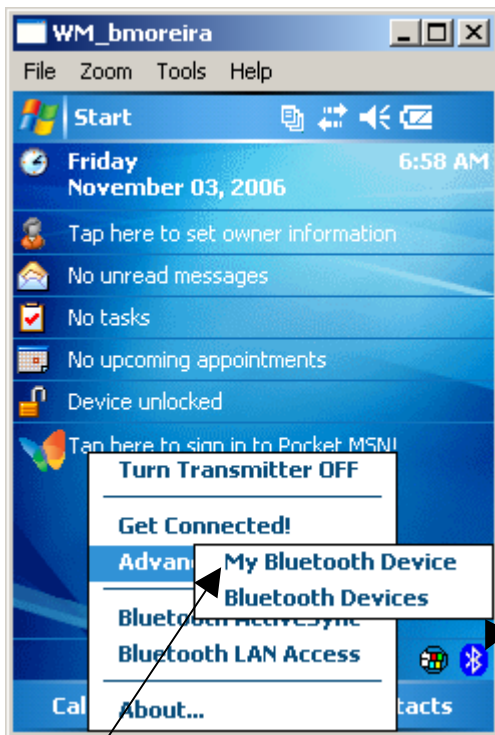


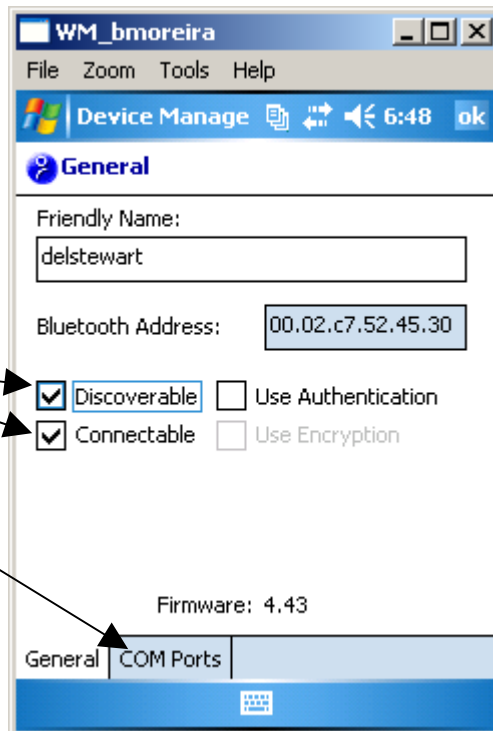
## TruPulse Bluetooth configuration for PPC 2003

Power up Mobile Device, go to SocketCommunications Bluetooth manager:



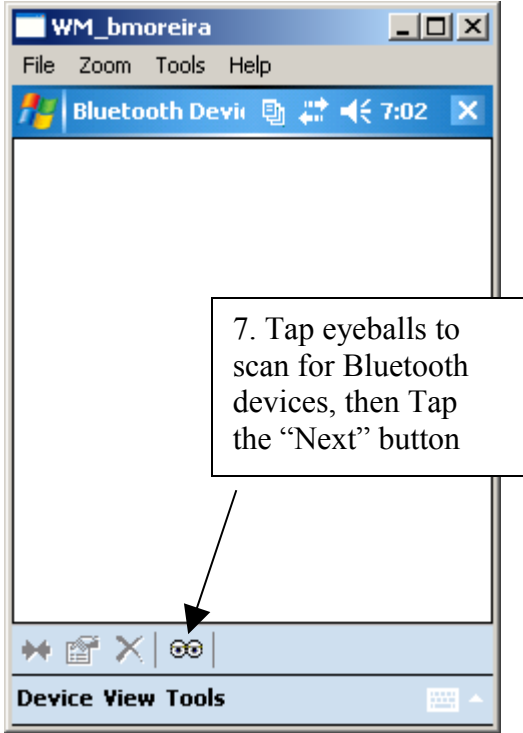
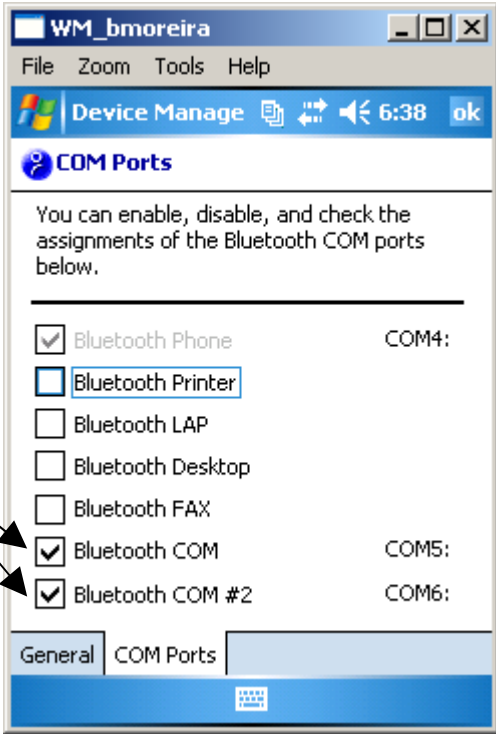
1. Tap Bluetooth Icon in lower right of

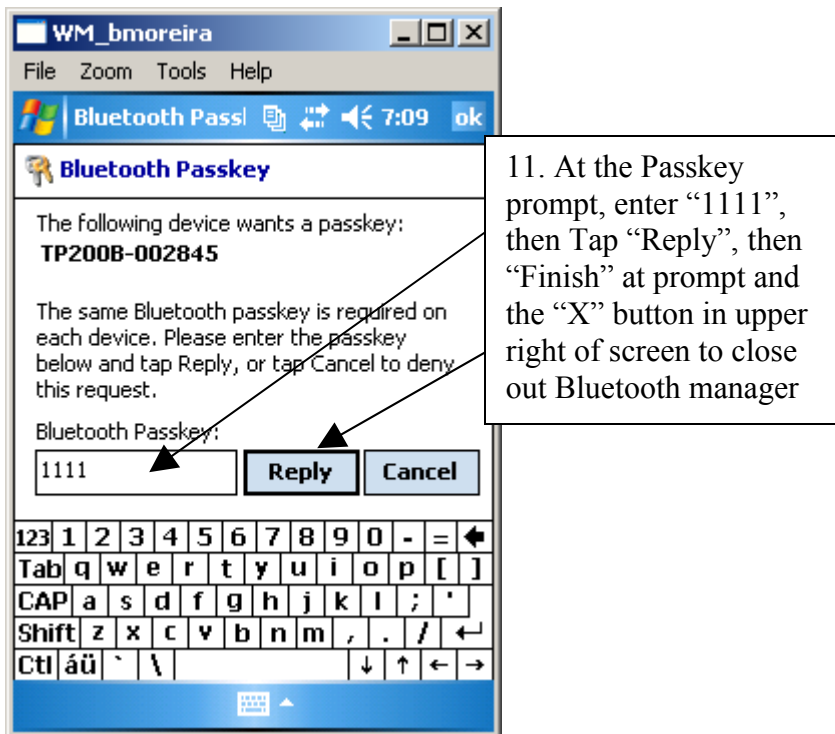
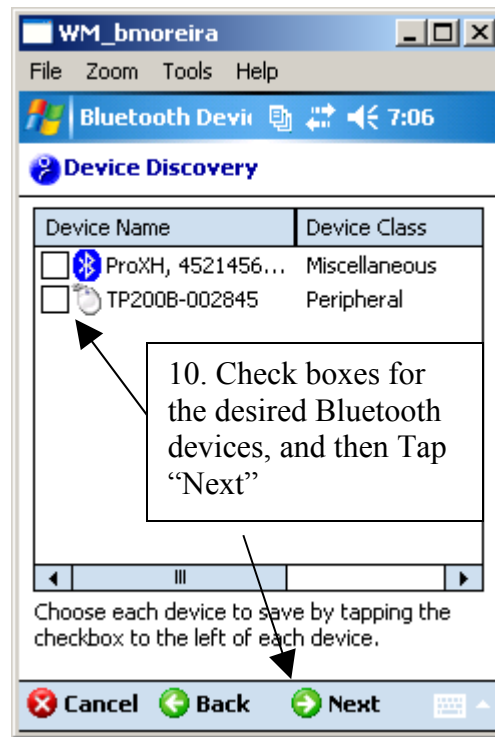
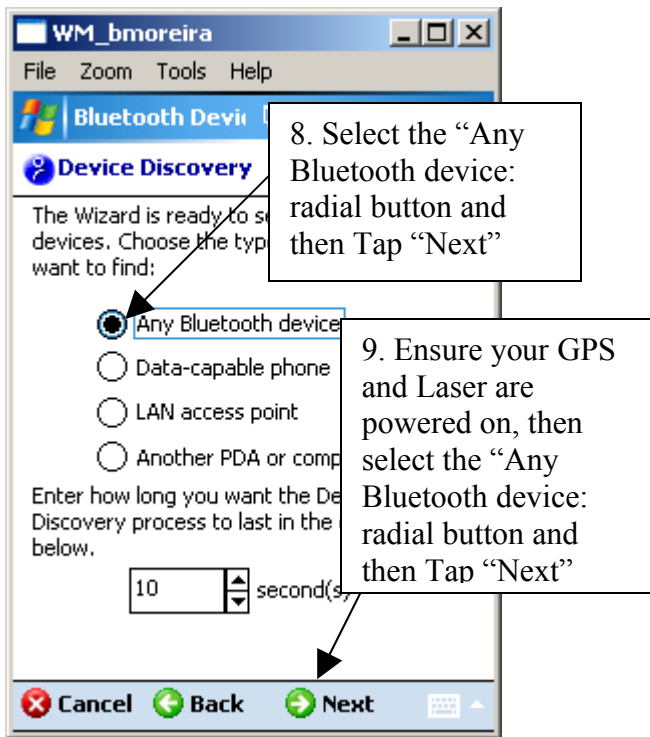
2. Select Advanced Features/My Bluetooth Device



3. Check "Discoverable" and "Connectable" boxes, then Tap COM Ports Tab

4. Deselect all BT COMS except last two on list (one for GPS, one for Laser)  
5. Tap "OK" button to accept settings





\*Note, that if you do this process twice, one time for each device, it's easier to identify which device is allocated to COM 5 and which is allocated to COM 6.