

TruPulse ® Series Connection to ESRI ArcPad Software

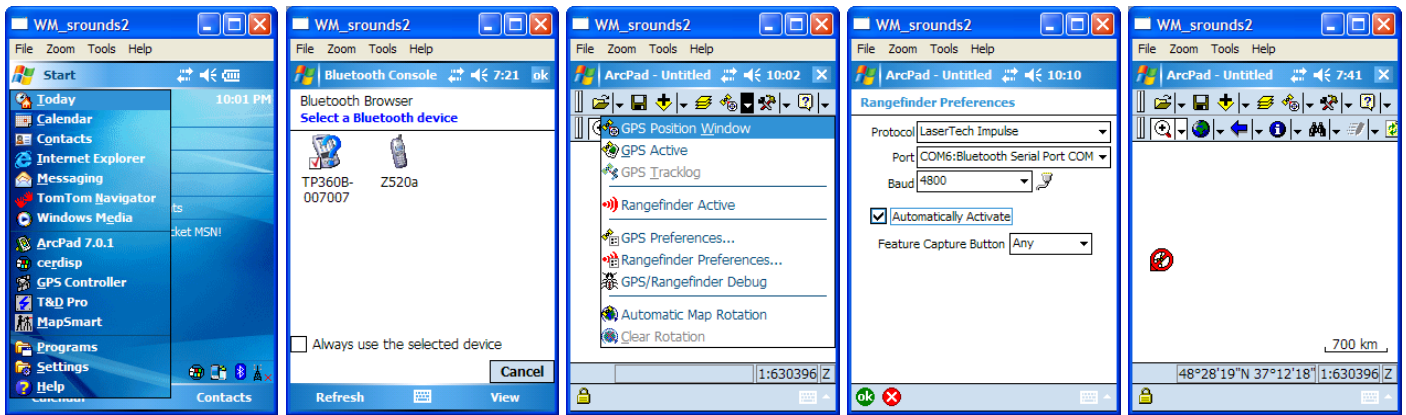
TruPulse 200B & 360B Properties:

Firmware Version: any release

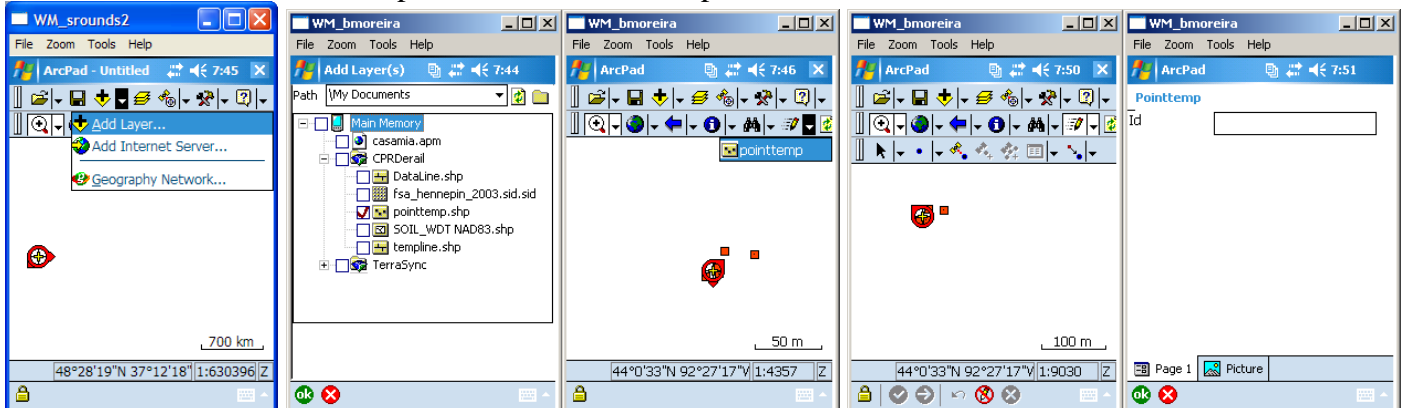
ArcPad Software Properties:

V7.0.1

1. Start the ArcPad software program.
 - a. Select a Bluetooth Device (TP360B- serial number)
 - b. Open an existing map or start new empty map.
 - c. Within the program navigate to GPS/Laser drop down list and set known GPS preferences, then tap “GPS Active”.
 - d. Then in GPS/Laser drop down list, tap “Rangefinder Preferences”, select “LaserTech Impulse” from the protocol list, select the proper COM port, check the “Automatically Activate” box and then Tap “OK”
 - e. Select GPS/Laser drop down list, and select “GPS Active”, then again select “Rangefinder Active”.



2. Tap the Add Layer drop down and then select “Add layer”.
 - a. Select shapefile layer to add, and the press “OK”.
 - b. Add toolbar to create features, by Tapping the Edit drop down menu, then selecting layer.
 - c. Select the GPS point button to create a point.



To apply a Laser Offset: 3

3. Tap the Offset drop down menu, then select “Offset Point”; select “Set Reference Point A”, Tap the point on the screen from which the laser measurement will be taken.
 - a. Fire the Laser and review data that was downloaded.
 - b. Press “OK” to review point on the map
 - c. One can input declination, foresight/back-sight and observer/target height values. Tap “OK” to accept.

